



CAPE COD JEWELRY®



VOLUME 3

LESTAGE® IS NOT AFFILIATED WITH
EDEN HAND ARTS OF DENNIS, MA,
THE CREATOR OF THE CAPE
COD SCREWBALL® BRACELET.

Carland Company

154 Warren Ave East Providence, RI 02914
1800-457-0057 www.carlandwholesale.com

 **LeStage**
by MARATHON

CAPE COD BRACELETS



SB5405
STERLING SILVER

5, 5½, 6, 6½, 7, 7½ & 8"

ZB5405
STERLING SILVER
WITH 14K GOLD BEAD

5, 5½, 6, 6½, 7, 7½ & 8"

RB5405
STERLING SILVER
WITH 14K ROSE GOLD BEAD

5½, 6, 6½, 7 & 7½"



SB5460
STERLING SILVER

5½, 6, 6½, 7, 7½ & 8"

ZB5460
STERLING SILVER
WITH 14K GOLD BEAD

5½, 6, 6½, 7, 7½ & 8"

RB5460
STERLING SILVER
WITH 14K ROSE GOLD BEAD

5½, 6, 6½, 7 & 7½"



SB5411
STERLING SILVER

5½, 6, 6½, 7, 7½ & 8"

ZB5411
STERLING SILVER
WITH 14K DOUBLE
GOLD BEAD

5½, 6, 6½, 7, 7½ & 8"

ATTRACTIVE CAPE COD JEWELRY®
BRACELET BOX & DELUXE
POLISHING CLOTH INCLUDED.



CAPE COD BRACELETS



KB5405
14K GOLD
6, 6½, 7 & 7½"



SB5407
PATTERNED STERLING SILVER
6, 6½, 7 & 7½"



FRONT

BACK

Attractive LeStage by Marathon® Cape Cod Jewelry® authenticity tag is included with each Cape Cod Bracelet. Each tag is crafted of sterling silver and assures that your bracelet is manufactured to our exacting quality standards.



FB5405
14K GOLD FILLED WITH
STERLING SILVER BEAD
6, 6½, 7 & 7½"

Gold Filled jewelry is composed of a solid layer of 14k gold permanently bonded to a strong base metal. The outer layer is durable 14k gold which unlike "gold-plated" jewelry will not flake or rub off. Because all outside layers are 14k gold, the bracelet appears and wears just like solid gold.



CAPE COD CUFF BRACELETS

AVAILABLE IN SIZES:
5½, 6, 6½, 7, 7½ & 8"



SB5410
STERLING SILVER

ZB5410
STERLING SILVER
WITH 14K GOLD BEAD



SB5463
STERLING SILVER

ZB5463
STERLING SILVER
WITH 14K GOLD BEAD

CAPE COD BEADS



SR5405
STERLING
SILVER



ZR5405
STERLING SILVER
WITH 14K GOLD



RR5405
STERLING SILVER WITH
14K ROSE GOLD



SR5460
STERLING
SILVER



ZR5460
STERLING SILVER
WITH 14K GOLD



SB5418-BEAD
STERLING
SILVER
THREADED



ZB5418-BEAD
STERLING SILVER
WITH 14K GOLD
THREADED

CAPE COD RINGS

AVAILABLE IN SIZES:
5, 6, 7, & 8



SF5405
STERLING
SILVER



ZF5405
STERLING
SILVER WITH
14K GOLD

CAPE COD EARRINGS

20MM HOOP EARRINGS



SE5405
STERLING SILVER



ZE5405
STERLING SILVER
WITH 14K GOLD TOP
WIRE AND BEAD



RE5405
STERLING SILVER
WITH 14K ROSE GOLD
TOP WIRE AND BEAD



SE5460
STERLING SILVER



ZE5460
STERLING SILVER
WITH 14K GOLD TOP
WIRE AND BEAD



RE5460
STERLING SILVER
WITH 14K ROSE GOLD
TOP WIRE AND BEAD

27MM HOOP EARRINGS



SE5405-J
STERLING SILVER



ZE5405-J
STERLING SILVER
WITH 14K GOLD
POSTS AND BEAD

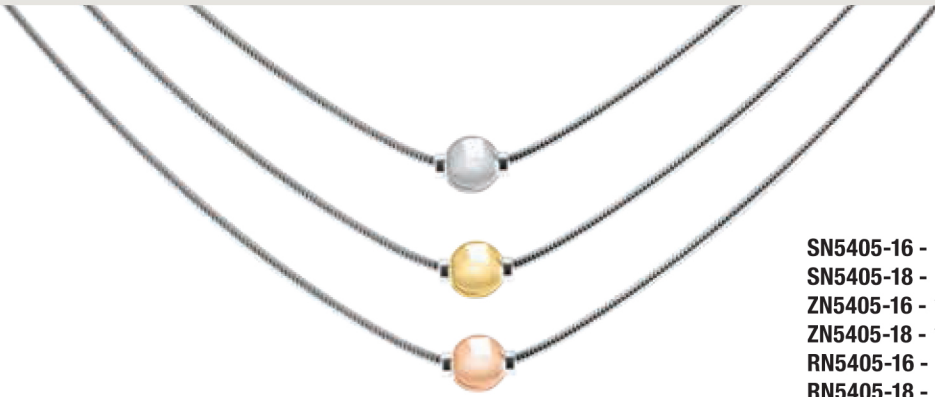


RE5405-J
STERLING SILVER
WITH 14K ROSE GOLD
POSTS AND BEAD



ATTRACTIVE CAPE COD JEWELRY®
EARRING BOX INCLUDED

SNAKE NECKLACES



**AVAILABLE IN 16" OR 18" SNAKE
CHAIN WITH LOBSTER CLASP**

- SN5405-16** - 16" STERLING SILVER
- SN5405-18** - 18" STERLING SILVER
- ZN5405-16** - 16" STERLING SILVER WITH 14K GOLD BEAD
- ZN5405-18** - 18" STERLING SILVER WITH 14K GOLD BEAD
- RN5405-16** - 16" STERLING SILVER WITH 14K ROSE GOLD BEAD
- RN5405-18** - 18" STERLING SILVER WITH 14K ROSE GOLD BEAD

FANCY SNAKE NECKLACES



**AVAILABLE IN 16" OR 18" SNAKE
CHAIN WITH LOBSTER CLASP**

- SN5460-16** - 16" STERLING SILVER
- SN5460-18** - 18" STERLING SILVER
- ZN5460-16** - 16" STERLING SILVER WITH 14K GOLD BEAD
- ZN5460-18** - 18" STERLING SILVER WITH 14K GOLD BEAD

OMEGA NECKLACES



**ADJUSTABLE 16" TO 18" OMEGA
CHAIN WITH LOBSTER CLASP**

- SN5405-0** - STERLING SILVER
- ZN5405-0** - STERLING SILVER WITH 14K GOLD BEAD
- RN5405-0** - STERLING SILVER WITH 14K ROSE GOLD BEAD

FANCY OMEGA NECKLACES



**ADJUSTABLE 16" TO 18" OMEGA
CHAIN WITH LOBSTER CLASP**

- SN5460-0** - STERLING SILVER
- ZN5460-0** - STERLING SILVER WITH 14K GOLD BEAD

ANKLETS

WITH ADJUSTABLE 9½" - 10½"
OMEGA CHAIN (SHOWN)
ALSO AVAILABLE WITH 9" OR 10" SNAKE CHAIN



SA5405-90 - 9" STERLING SILVER
SA5405-10 - 10" STERLING SILVER
SA5405-0 - OMEGA STERLING SILVER

ZA5405-90 - 9" STERLING SILVER WITH 14K GOLD BEAD
ZA5405-10 - 10" STERLING SILVER WITH 14K GOLD BEAD
ZA5405-0 - OMEGA STERLING SILVER WITH 14K GOLD BEAD

RA5405-90 - 9" STERLING SILVER WITH 14K ROSE GOLD BEAD
RA5405-10 - 10" STERLING SILVER WITH 14K ROSE GOLD BEAD
RA5405-0 - OMEGA STERLING SILVER WITH 14K ROSE GOLD BEAD

SA5460-90 - 9" STERLING SILVER
SA5460-10 - 10" STERLING SILVER
SA5460-0 - OMEGA STERLING SILVER

ZA5460-90 - 9" STERLING SILVER WITH 14K GOLD BEAD
ZA5460-10 - 10" STERLING SILVER WITH 14K GOLD BEAD
ZA5460-0 - OMEGA STERLING SILVER WITH 14K GOLD BEAD



ATTRACTIVE CAPE COD JEWELRY® BOX INCLUDED



CAPE COD JEWELRY®



*LeStage is not affiliated with Eden Hand Arts of Dennis, MA, the Creator of the Cape Cod Screwball® bracelet.

ATTRACTIVE DISPLAY AVAILABLE WITH PROGRAM PURCHASE.

 **LeStage**
by MARATHON

Carland Company

154 Warren Ave East Providence, RI 02914
1800-457-0057 www.carlandwholesale.com

Lifetime Warranty
Against Manufacturer Defects
www.marathon-co.com
Proudly Manufacturing in the U.S.A.